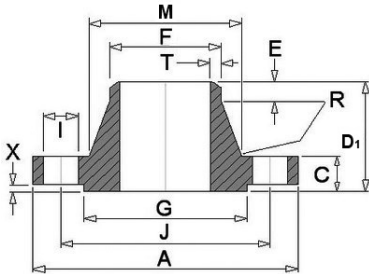


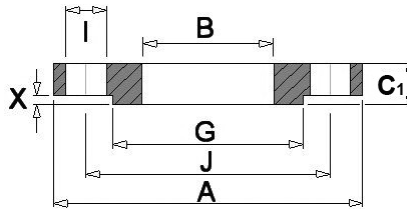


BS4504 PN40 Flanges

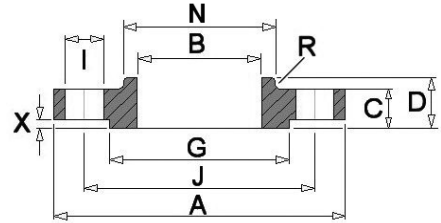
CODE 111



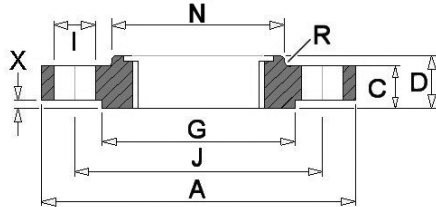
CODE 101



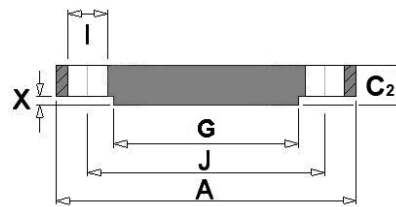
CODE 112



CODE 113



CODE 105



Dimensions in mm

Nom. Size	Flange					Raised Face		Boss	No.	Drilling			Bolting	Neck					Bore Diameter
	A	C	C1	C2	D	D1	G			X	I	J		M	F	E	R	T	
10	90	16	14	16	22	35	40	2	30	4	14	60	M12	28	17.2	6	3	1.8	18.0
15	95	16	14	16	22	38	45	2	35	4	14	65	M12	32	21.3	6	3	2.0	22.0
20	105	18	16	18	26	40	58	2	45	4	14	75	M12	40	26.9	6	4	2.3	27.5
25	115	18	16	18	28	40	68	2	52	4	14	85	M12	46	33.7	6	4	2.6	34.5
32	140	18	18	18	30	42	78	2	60	4	18	100	M16	56	42.4	6	5	2.6	43.5
40	150	18	18	18	32	45	88	3	70	4	18	110	M16	64	48.3	7	5	2.6	49.5
50	165	20	20	20	34	48	102	3	84	4	18	125	M16	74	60.3	8	5	2.9	61.5
65	185	22	22	22	38	52	122	3	104	8	18	145	M16	92	76.1	10	6	2.9	77.5
80	200	24	24	24	40	58	138	3	118	8	18	160	M16	110	88.9	12	6	3.2	90.5
100	235	24	26	24	44	65	162	3	145	8	22	190	M20	134	114.3	12	6	3.6	116.0
125	270	26	28	26	48	68	188	3	170	8	26	220	M24	162	139.7	12	6	4.0	141.5
150	300	28	30	28	52	75	218	3	200	8	26	250	M24	190	168.3	12	8	4.5	170.5
200	375	34	36	36	52	88	285	3	260	12	30	320	M27	244	219.1	16	8	6.3	221.5
250	450	38	42	38	60	105	345	3	312	12	33	385	M30	306	273.0	18	10	7.1	276.5
300	515	42	48	42	67	115	410	4	380	16	33	450	M30	362	323.9	18	10	8.0	327.5
350	580	46	54	46	72	125	465	4	424	16	36	510	M33	408	355.6	20	10	8.8	359.5
400	660	50	60	50	78	135	535	4	478	16	39	585	M36	462	406.4	20	10	11.0	411.0
450	685	50	66	54	84	135	560	4	522	20	39	610	M36	500	457.0	20	12	12.5	462.0
500	755	52	72	56	90	140	615	4	576	20	42	670	M39	562	508.0	20	12	14.2	513.5
600	890	60	84	70	100	150	735	5	686	20	48	795	M45	666	610.0	20	12	16.0	616.5

* Care should be taken with these sizes as the pipe o.d. does not relate to normal stainless steel dimensions.

1. Weldnecks (code 111) are bored to suit schedule of pipework used.
2. Code 105 flanges are supplied flat faced unless otherwise requested by the purchaser.